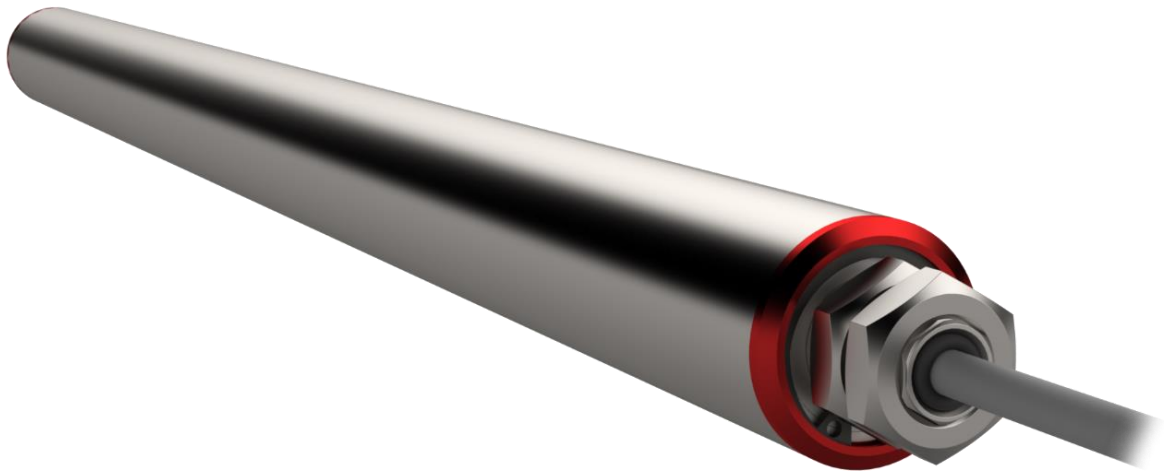


Motor roller **ADONIS 30**



The smallest motor roller from MTA Systems convinces with excellent performance data. The drive for this motor roller is the result of the consistent continuation of uncompromising development work in terms of motor and gear technology. The ADONIS 30 motor rollers come with very powerful, yet efficient, synchronous motors, which have been designed using the very latest calculation methods for the application in question. The motors are equipped with planetary gears, which are dimensioned for compactness and output density. The planetary wheels of each gearing stage are fitted with their own bearing. This guarantees the highest level of quiet operation and a long working life. The motor rollers can be adapted to the respective application with regard to their connection dimensions and mechanical/electrical interfaces

Characteristics

Applications

- Package conveying technology for packages, standardised containers, crates, boxes
- Drive for the belt conveyor and other conveyors

Features

- Motor with brushless synchronous technology and high energy efficiency
- Maintenance-free due to lifetime-lubricated planetary gearboxes
- Increased protection standards possible on request

Technical data

Technical data		
Motor type		Synchronous motor
Insulation class of the motor winding		Class F
Voltage	VAC	24
Nominal current	A	2.8
Maximum current	A	5.5
Protection type		IP54 (on request IP67)
Noise level		< 55dB (depending on the application)
Length of motor cable	mm	500*
Clamping length	mm	150 to 600*
Ambient temperature	°C	0 to 40 °C
Version A side		Axis M12 × 1, hexagon SW11
Version B side		Stub axle Roller base antistatic with internal thread M6
Pipe wall thickness	mm	1.5
Pipe material		Galvanised steel / stainless steel
Pipe sleeve		PVC hose, PU hose, rubber coating
Pipe		straight
Maximum load		Depending on pipe length



*Dimensions and design can be adapted according to the customer.

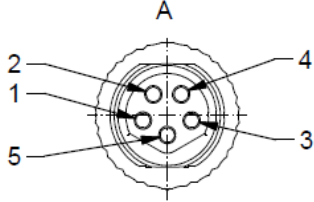
Options

- Rubber coating for bands

Electric connection motor roller ADONIS 30

If the motor and encoder cable are separated, the following specification applies to the motor

Signal	Pin	Description	Wire colour
U	1	Motor phase U	Brown
V	2	Motor phase V	White
W	3	Motor phase W	Black
NP	4	Neutral point	Blue
PE	5	Earth	Grey



Cable specification: Construction: 5 x 0.34 mm ² Material: TPU, UL 20549, Nominal voltage: 300V Outer diameter: 5.10 +/- 0.15 mm Temperature: unremoved: -40°C ... +80°C moved: -25°C ... +80°C Certification: CE, UL Halogen free: Yes	Connector specification: Type: Circular connector M8x1 Coding: B Gender: Coupling, pin Number of pins: 5 Manufacturer: Conec
--	--



On request, the connection cables can be supplied with open ends or with pre-assembled connection plugs.

The following tables show motor variants with the corresponding power rating.

Mechanical data motor roller ADONIS 30

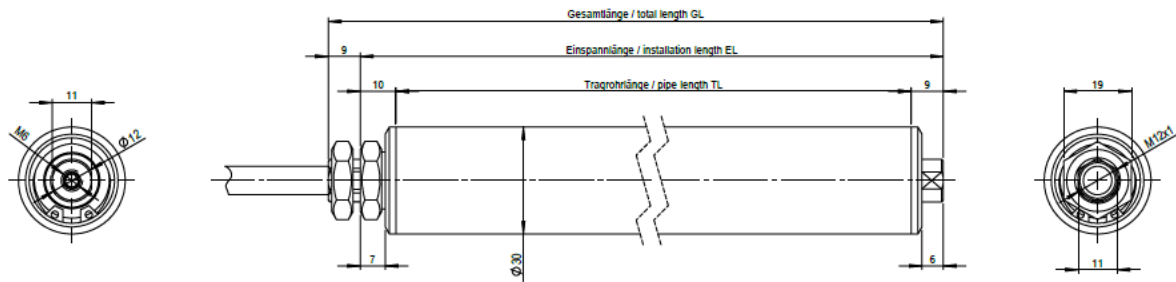
Type	Performance [kW]	v [m/s]	i**	M_n [Nm]	M_{max} [Nm]	M_o [Nm]	F_n [N]	F_{max} [N]
ADONIS 30	0.030	0 ... 0.09	77	0.5	0.6*	0.6*	2541	3080
		0 ... 0.11	64	0.5	0.6*	0.6*	2112	2560
		0 ... 0.51	13	0.49	0.6*	0.6*	429	520
		0 ... 1.05	6	0.25	0.6*	0.43	115	240

* Limited by M8 connection cable

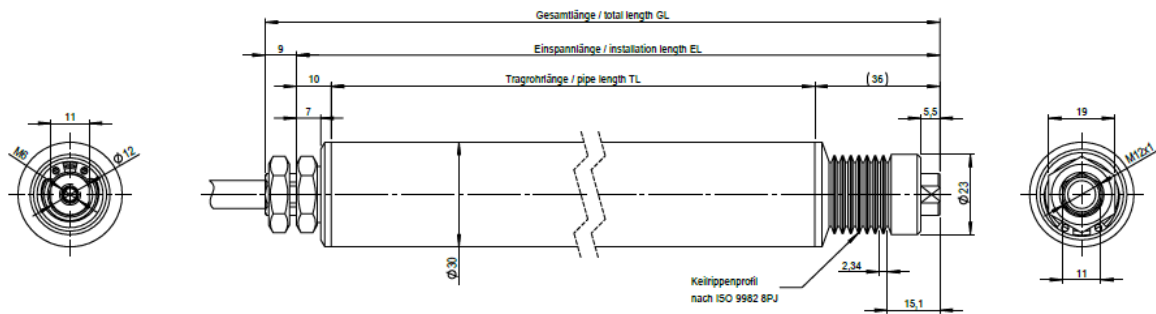
** other gear ratios on request

Dimensions

Smooth version



Poly-V version



Round belt version

